

### Specifications

| Models                                | SX-180     |         |
|---------------------------------------|------------|---------|
| Measurements                          | US         | Metric  |
| Working height maximum*               | 186 ft     | 56.86 m |
| Platform height maximum               | 180 ft     | 54.86 m |
| Horizontal reach maximum              | 80 ft      | 24.38 m |
| Below ground reach                    | 2 ft       | 0.61 m  |
| <b>A</b> Platform length              | 3 ft       | 0.91 m  |
| <b>B</b> Platform width               | 8 ft       | 2.44 m  |
| <b>C</b> Height - stowed              | 10 ft      | 3.05 m  |
| <b>D</b> Length - stowed              | 53 ft 1 in | 16.18 m |
| Length - transport (jib tucked under) | 42 ft 8 in | 13.00 m |
| <b>E</b> Width - axles retracted      | 8 ft 2 in  | 2.49 m  |
| Width - axles extended                | 16 ft 6 in | 5.03 m  |
| <b>F</b> Wheelbase - axles retracted  | 16 ft 6 in | 5.03 m  |
| Wheelbase - axles extended            | 15 ft 6 in | 4.72 m  |
| <b>G</b> Ground clearance - center    | 1 ft 3 in  | 0.38 m  |

### Productivity

|   |                      |           |
|---|----------------------|-----------|
| Lift capacity                           | 750 lb               | 340 kg    |
| Platform rotation                       | 160°                 |           |
| Vertical jib rotation                   | 135°                 |           |
| Horizontal jib rotation                 | 60°                  |           |
| Turntable rotation                      | 360° continuous      |           |
| Turntable tailswing - axle retracted    | 3 ft 9 in            | 1.14 m    |
| Turntable tailswing - axle extended     | 3 ft 6 in            | 1.07 m    |
| Drive speed - stowed                    | 2.3 mph              | 3.7 km/h  |
| Drive Speed - out of stowed             |                      |           |
| below 125 ft (38.1 m)                   | 0.4 mph              | 0.65 km/h |
| above 125 ft (38.1 m)                   | 0.1 mph              | 0.17 km/h |
| Gradeability - stowed                   | 35%                  |           |
| Turning radius - axle retracted: inside | 20 ft 7 in           | 6.27 m    |
| outside                                 | 28 ft 1 in           | 8.56 m    |
| Turning radius - axle extended: inside  | 9 ft 11 in           | 3.02 m    |
| outside                                 | 24 ft 1 in           | 7.34 m    |
| Controls                                | 12 V DC proportional |           |
| Tires                                   | 445D50/710HD         |           |

### Power

|                         |   |
|-------------------------|---|
| Power source            | Deutz TD2.9 L4, 74 hp (55 kW), Tier 4 final<br>Perkins 854F-E34T, 74 hp (55 kW), Tier 4 final |
| Auxiliary power unit    | 12 V DC   |
| Hydraulic tank capacity | 110 gal      416 L  |
| Fuel tank capacity      | 50 gal      189 L   |

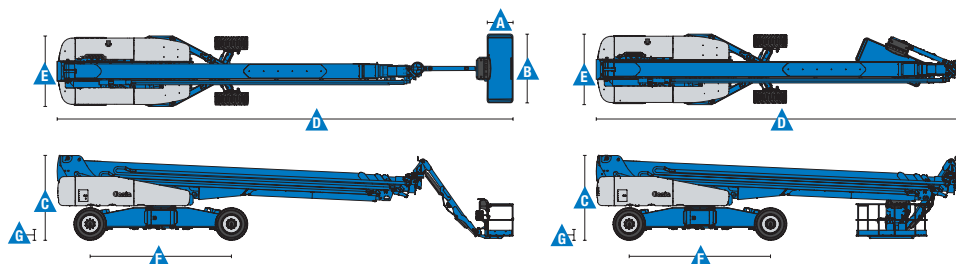
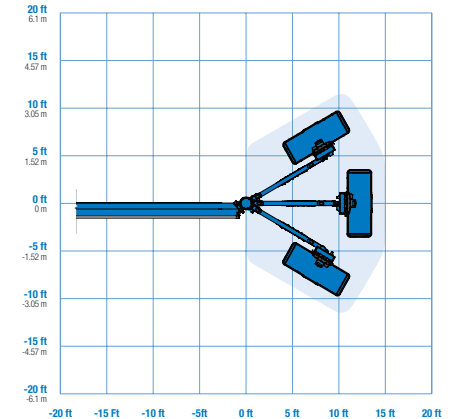
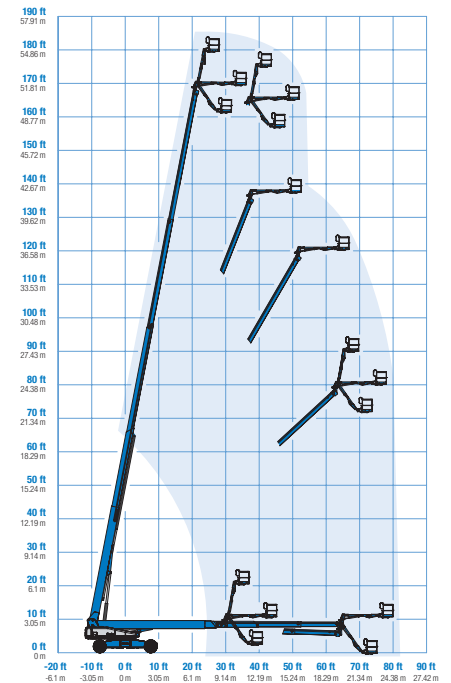
|           |            |           |
|-----------|------------|-----------|
| Weight*** | 55,000 lbs | 24,948 kg |
|-----------|------------|-----------|

### Standards Compliance

ANSI A92.5, CSA B354.4, EN 280, AS 1418.10

\* The metric equivalent of working height adds 2 m to platform height. U.S. adds 6 ft to platform height.  
 \*\* Gradeability applies to driving on slopes. See operator's manual for details regarding slope ratings.  
 \*\*\* Weight will vary depending on options and/or country standards.

### Range Of Motion SX-180



### Features

#### Standard Features

##### Measurements

- 186 ft (57 m) working height
- 80 ft (24.4 m) horizontal reach
- 750 lb (340 kg) lift capacity

##### Productivity

- Xchassis extendable axles
- 10 ft (3.05 m) 60° rotating jib
- Self-leveling platform
- 160° hydraulic platform rotation
- Proportional joystick controls
- Hydraulic oil cooler
- Drive enable
- AC power in the platform
- Horn
- Hour meter
- Tilt alarm
- Descent alarm
- 360° continuous turntable rotation
- Positive traction 4WD
- Two speed wheel motors
- Four wheel high angle steer
- Four steering modes: front, rear, crab and coordinated
- On board full diagnostics and engine monitoring display
- Telematics ready connector
- Entry Toeboard
- Lift Guard™ Contact Alarm

##### Power

- 7.5 kW welder ready generator
  - 208V/120V/60Hz (North America)
  - 415V/240V/50Hz (Europe & Australia)
  - 110V/55V/50Hz (UK)
- 12 V DC auxiliary power
- Auto engine fault protection
- Swing out engine tray

#### Easily Configured To Meet Your Needs

##### Platform Options

- Steel 8 ft (2.44 m) (standard)
- 8 ft (2.44 m) tri-entry

##### Engine Options

- 74 hp (55 kW) Deutz turbo diesel, T4f\* (standard)
- 74 hp (55 kW) Perkins turbo diesel, T4f\*

##### Drive/Steer

- 4WD (standard)
- 4WS (standard)

##### Tires

- Rough terrain foam-filled (standard)

#### Options & Accessories

##### Productivity Options

- Platform swing gate
- Half-mesh platform inserts
- Welder package
- Welder Ready package
- Cold weather, fire resistant, or biodegradable hydraulic oil
- Hostile environment kit
- Deluxe hostile environment kit
- Thumb rocker steer
- Light package
- Entry toe boards
- Pipe cradle (pair)
- Alarm package\*\*
- Panel cradle package
- Lockable platform control box cover
- Operator Protective Structure\*\*
- Fall Arrest Bar
- Anemometer

##### Power Options

- 12.5 kW welder ready AC generator 208V/110V/60Hz
- Cold weather kit
- Diesel scrubber/catalytic muffler
- Intake air pre-cleaner

\* Also available as Tier 4i in limited regions  
\*\* Available through aftermarket parts only



#### Genie United States

6464 185th Ave. NE  
Redmond, WA 98052  
Telephone +1 (425) 881-1800  
Toll Free in USA/Canada +1 (800)-536-1800  
Fax +1 (425) 883-3475

#### Distributed By:

